

Part 1. First Half

Six months ended September 30, 2002

Financial Highlights (unaudited)

HOYA CORPORATION and Consolidated Subsidiaries

Performance for the six months ended September 30, 2002 and 2001 (unit:Millions of Yen)

(Figures less than a million yen are omitted.)

(1)Results of Operations	Six months ended September 30,		variance(%)	Year ended March 31,
	2002	2001		2002
Net sales	123,013	118,358	(3.9)	235,265
Operating income	26,549	22,847	(16.2)	43,897
Ordinary income	25,027	22,697	(10.3)	45,774
Net income	14,845	13,660	(8.7)	23,740
Net income per share(Yen)	127.84	117.63		204.44
Net income / shareholders' equity	6.6%	6.8%		11.5%
Ordinary income / total assets	8.8%	8.5%		16.8%
Ordinary income / net sales	20.3%	19.2%		19.5%

Note : No changes have been made in accounting policy.

(2)Financial Position	As of Sep. 30,	As of Mar. 31,	As of Sep. 30,
	2002	2002	2001
Total assets	291,099	278,067	268,316
Shareholders' equity	227,964	219,180	204,363
Shareholders' equity ratio	78.3%	78.8%	76.2%
Shareholders' equity per share (Yen)	1,963.19	1,887.50	1,759.87

(3)Conditions of Cash Flows	Six months ended September 30,	
	2002	2001
Net cash provided by operating activities	32,371	15,127
Net cash used in investing activities	-6,379	-10,743
Net cash provided (used in) financing activities	-3,161	-4,920
Cash and cash equivalents, end of period	88,068	51,125

Ref:Performance of HOYA CORPORATION (non-consolidated)

	Millions of Yen			
	Six months ended September 30,		change(%)	Year ended March 31,
	2002	2001		2002
Net sales	79,432	78,292	(1.5%)	151,789
Operating income	13,895	13,335	(4.2%)	23,985
Ordinary income	15,430	17,333	(-11.0%)	30,169
Net income	8,700	11,087	(-21.5%)	15,333
Net income per share(Yen)	74.92	95.48		132.04
Total assets	227,892	219,498		217,074
Shareholders' equity	177,565	169,632		171,933

Note: Hoya Corporation discloses financial reports quarterly on consolidated basis.

The forecast for the fiscal year will be released on consolidated basis when the business results for the third quarter are disclosed.

Hoya Corporation does not guarantee the accuracy or completeness of the information herein. Unless otherwise stated estimates or forecasts are solely those of our company and subject to change without notice. Hoya Corporation accepts no liability whatsoever for any direct or consequential loss arising from any use of this report.

(1) Global Group Management

The HOYA group ("HOYA") consists of HOYA CORPORATION (the "Company"), 52 consolidated subsidiaries and six affiliates including two affiliates accounted for by the equity method (as of Sep. 30, 2002).

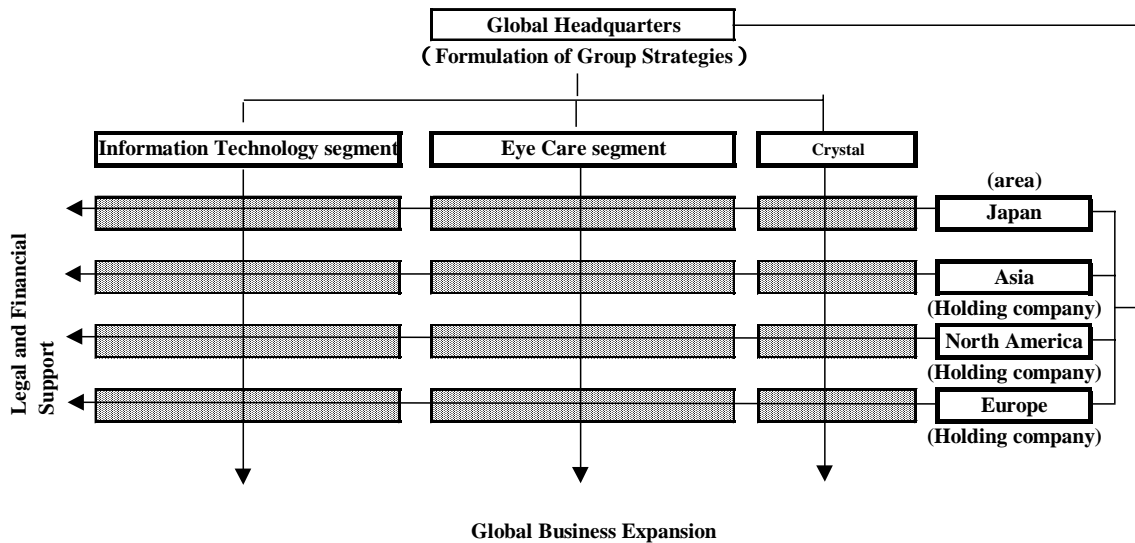
The Company and its consolidated subsidiaries are engaged mainly in the manufacture and sales of products in six major segments : Electro-Optics, Photonics, Vision Care, Health Care, Crystal and Service.

The products of each segment are manufactured by the Company, or by its subsidiaries and affiliates overseas.

In the domestic market, products are sold directly to retailers, specialty stores or assemblers. Products destined for overseas markets are exported to subsidiaries in various countries and marketed by them.

HOYA has adopted a global group management system. The Information Technology and Eye Care segment implement the corporate strategy formulated at the Group Headquarters. Regional holding companies in three areas serve legal and financial supports to sales activities of regional subsidiaries as the frontline representatives of Global Headquarters.

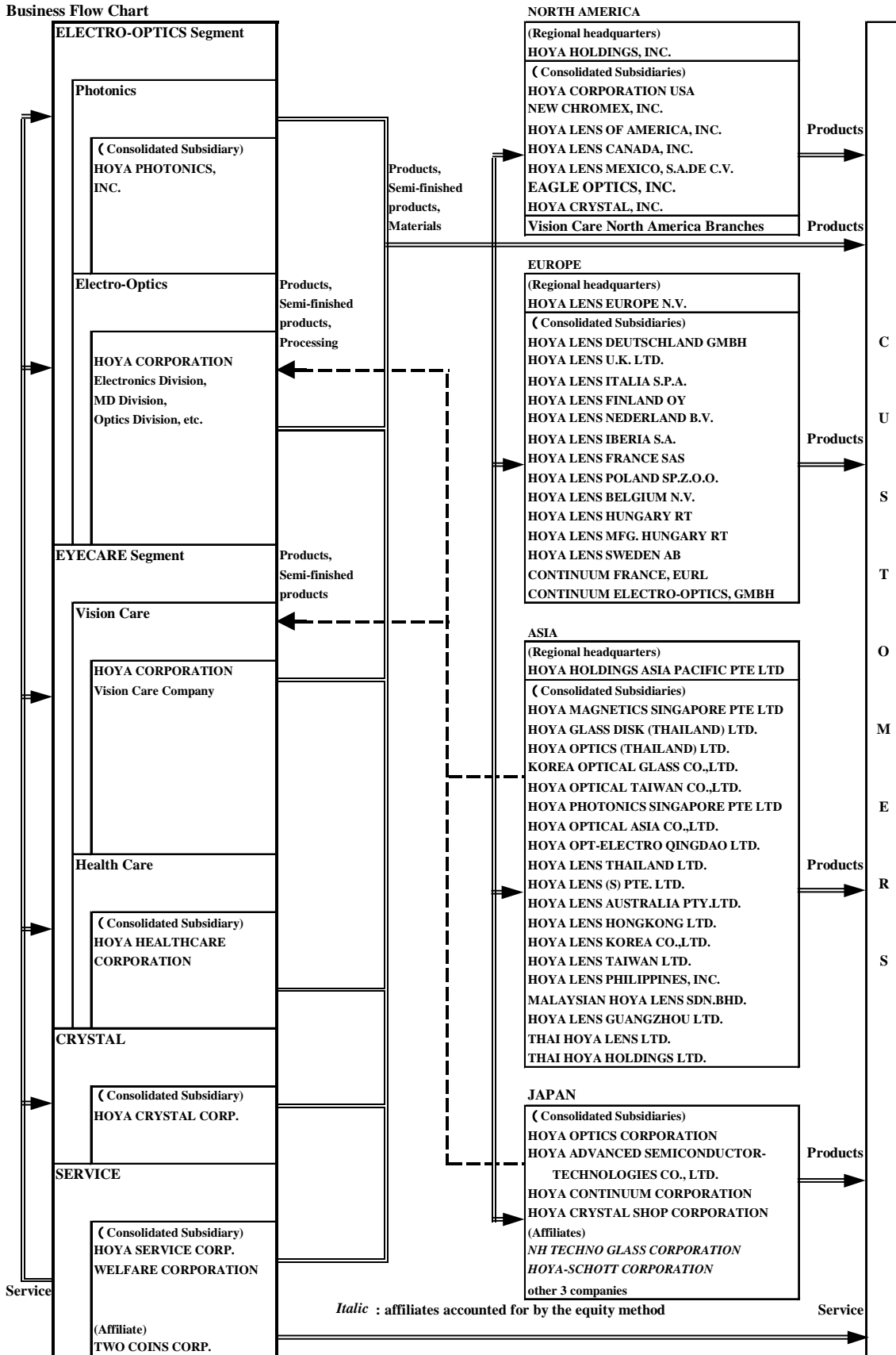
Global Group Management System



The Company and its consolidated subsidiaries are engaged mainly in the manufacture and sales of products in six major industries as per below: **Electro-Optics, Photonics, Vision Care, Health Care, Crystal and Service.**

Business Categories	Industries	Products and Services	Major Subsidiaries and Affiliates
Information Technology	Electro-Optics	Photomasks and Maskblanks for semiconductors, Masks and Devices for LCDs; Glass disks for hard disk drives (HDDs); Optical lenses, Optical glasses, Optical communication related devices, etc.	HOYA CORP. Electronics Division, etc. HOYA CORPORATION USA HOYA MAGNETICS SINGAPORE PTE LTD HOYA GLASS DISK (THAILAND) LTD. HOYA OPTICS CORPORATION
	Photonics	Laser equipments for industrial, research & laboratory, and medical purposes	HOYA PHOTONICS, INC. HOYA CONTINUUM CORP.
Eye Care	Vision Care	Eyeglass lenses, Eyeglass frames, Ophthalmic equipments, etc.	HOYA CORP. Vision Care Company HOYA LENS DEUTSCHLAND GMBH HOYA LENS U.K. LTD. HOYA LENS OF AMERICA, INC. HOYA LENS THAILAND LTD.
	Health Care	Contact lenses and accessories, Intraocular lenses, Hearing aids, etc.	HOYA HEALTHCARE CORPORATION
Lifestyle Refinement	Crystal	Crystal glass products	HOYA CRYSTAL CORPORATION, HOYA CRYSTAL, INC.
	Service	Design of information systems, Placement of temporary staff, etc.	HOYA SERVICE CORPORATION

Business Flow Chart



(2) Management Policies

An outline of the management policies of the HOYA Group is as follows:

Top Priority Policy of the Management "Maximization of Corporate Value"

1. SVA Management

(SVA:Shareholders' Value Added or an increment in shareholder value during one fiscal year)

In order to maximize shareholder value, we will streamline our management and carry out SVA management. We are confident that we will be able to respond to the expectations of our shareholders and satisfy all stakeholders with an increase in corporate value by producing profits that exceed capital costs while paying due attention to all expenses.

2. Corporate Governance (Outside board members)

We believe that a business should be managed so as to maximize shareholder value. With a view to ensuring that the board of directors adequately represents the shareholders' interests, the Company has co-opted three external directors to supervise and advise the senior management.

3. Global Niche Strategy (Gain top-share in global market)

Applying our original technologies, which have been accumulated over many years, the Company will develop technologies that will prevail in the global marketplace, create new business fields with growth potential to attain the top market shares therein, and develop them into highly profitable businesses.

4. Harmonizing the Interests of Management, Employees and Shareholders

In order to improve business results and produce profits for both shareholders and management/employees simultaneously, board members are obliged to own shares in the Company, bonus payments to employees are linked to business results, and an employee stock ownership plan has been established that allows employees to have a sense of participation in the management of the Company.

The Company has adopted new system that places importance on the employees' abilities so that they can work with enthusiasm.

5. Global Group Management

We will make the best combination of management resources in order to give full play to our competitive edge in a global perspective and strive to increase our share of overseas business.

Measures designed to promote globalization include not only expansion of the worldwide marketing network and transfer of manufacturing overseas, but also employment of locals in the senior management of overseas subsidiaries.

(3) Business Overview

1. Results of Operations

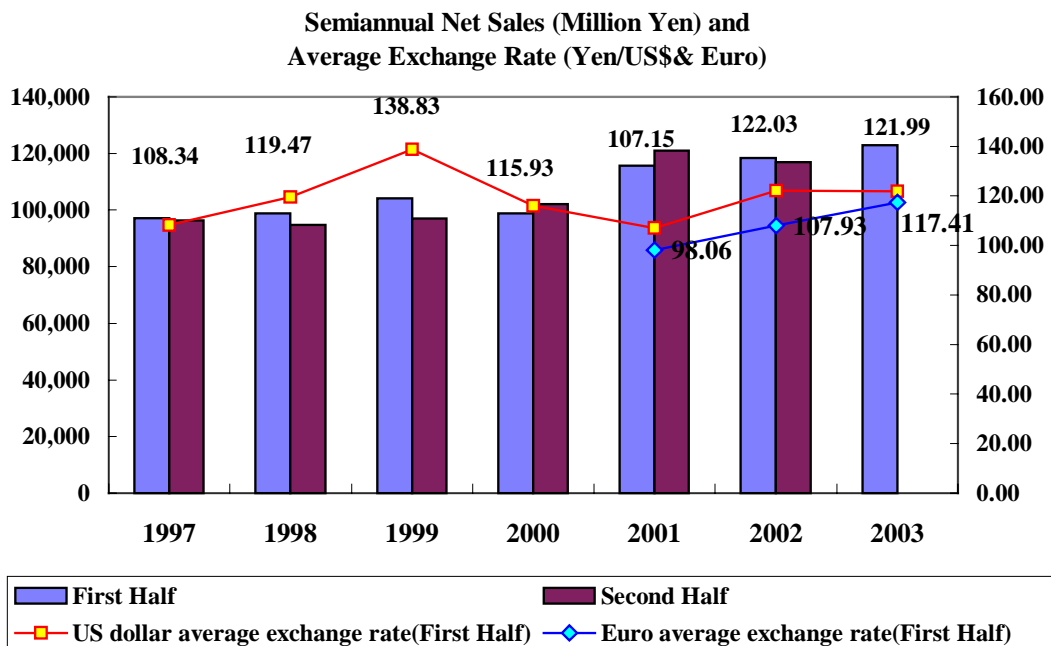
1) General Overview

<u>Results of Operations</u>	<u>Millions of Yen</u> <u>Six months ended Sep. 30, 2002</u>
Net sales	123,013
Operating income	26,549
Ordinary income	25,027
Net income	14,845
Net income per share(Yen)	127.84

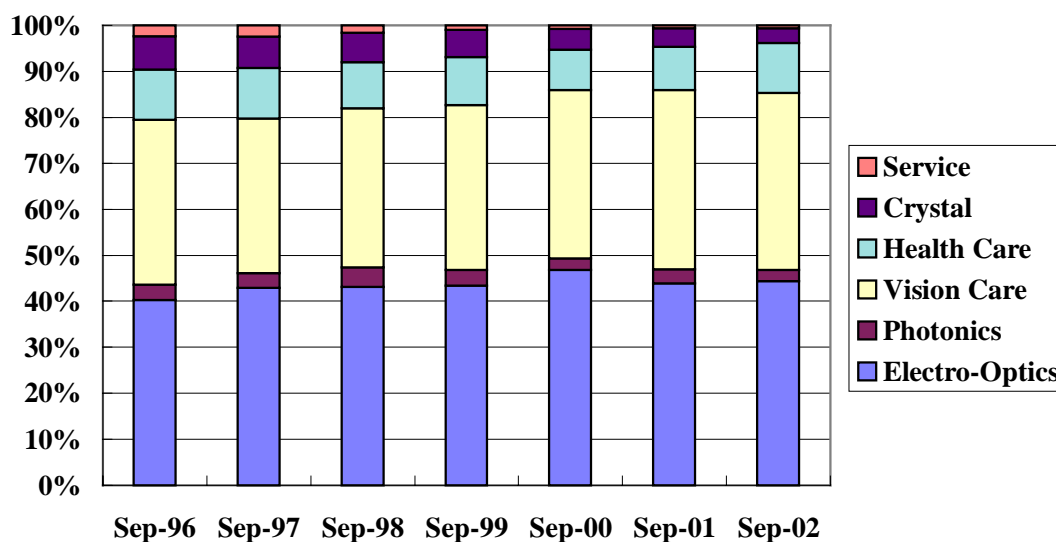
In terms of the economic conditions during the six months under review, a moderate recovery trend was observed in the April to June period in the Japanese economy as business conditions, mainly in the United States, recovered due to progress in inventory adjustment. In July to September, however, the unclear business outlook deepened again as corporate investment in information technology (IT) was depressed and personal consumption stagnated amid revelation of accounting scandals in the United States and a lowering of stock prices worldwide, etc.

In the currency markets during the same six months, the US dollar remained at almost the same level, the euro appreciated by 8.8%, and the Thai baht also appreciated by 5.9%, all against the yen, respectively on a year-on-year basis.

In this business environment, sales of the Electro-Optics segment of the HOYA Group increased as product precision was enhanced to meet customers demand for innovative products and as orders increased at the close of the inventory adjustment cycle. In the Eye Care segment, sales increased as mainstay products sold solidly including eyeglass lenses in the Vision Care division and contact lenses in the Health Care division, etc. As a result, consolidated sales during the six months increased 3.9% on a year-on-year basis to Yen 123,013 million.



Ratio of Net Sales by Business Segment - First Half

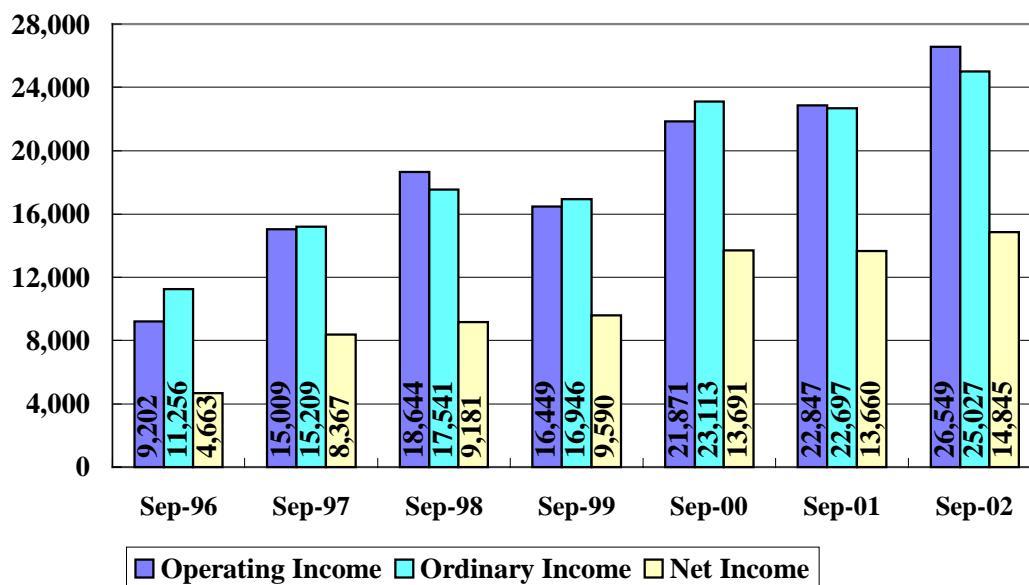


In the six months under review, profitability improved as product precision was enhanced to meet customers demand and costs were reduced with the shifting overseas of production facilities. As a result, operating income and ordinary income increased 16.2% and 10.3% respectively on a year-on-year basis. Net income, as the Company carried out business reform in the Vision Care and Crystal divisions and posted Yen 2,273 million of extraordinary losses that included additional expenditure for early retiremen, increased 8.7%. These operation results all recorded historical interim basis.

Net interim income per share was Yen 127.84, an increase of Yen 10.21 on a year-on-year basis.

In terms of an interim dividend, Yen 25 per share will be paid, same as the interim dividend of the last year.

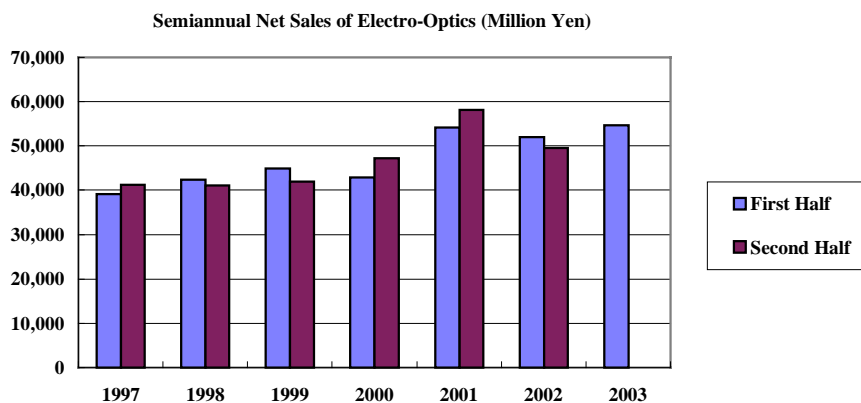
Interim Profits (Million Yen) - First Half



2) Segment Overview

1. Information Technology

Electro-Optics



In terms of mask blanks for manufacturing semiconductors, though the semiconductor market did not expand quantitatively, high-precision products sold favorably such as blanks for phase-shift masks, etc. for manufacturing next-generation products. Consequently, sales increased on a year-on-year basis.

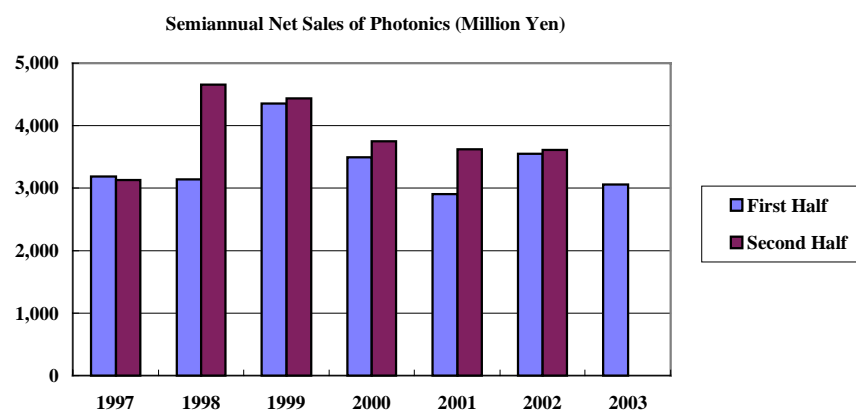
Sales of photomasks for manufacturing semiconductors remained almost the same year-on-year as major manufacturers of semiconductors in Japan focused product development more narrowly and the number of product types did not increase.

Sales of photomasks for LCDs increased on a year-on-year basis as mass production lines for manufacturing next-generation products started up in overseas markets.

In terms of glass disks for HDDs (Hard Disk Drives), sales of glass substrates (Substrates) decreased due to the effects of depressed sales of PCs. Overall, sales decreased on a year-on-year basis.

In terms of optical lenses and glasses, sales increased on a year-on-year basis as the sales of the lenses for digital still and video cameras increased favorably on a year-on-year basis due to a recovery of the market.

Photonics

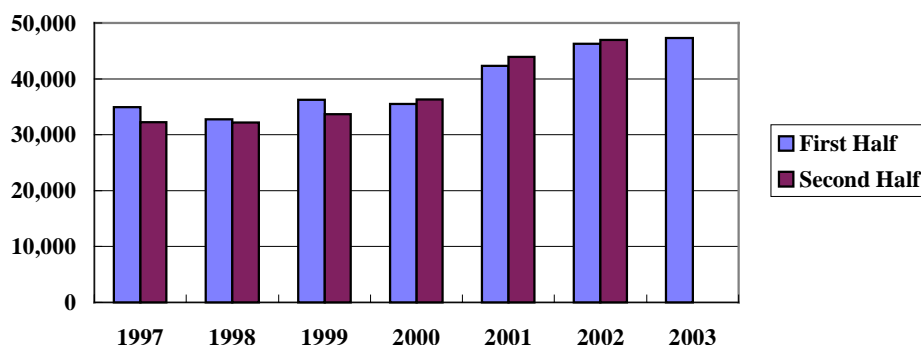


In terms of laser-related equipment (Photonics), although equipment for dental use sold favorably, overall sales decreased on a year-on-year basis.

2. Eye Care

Vision Care

Semiannual Net Sales of Vision Care (Million Yen)

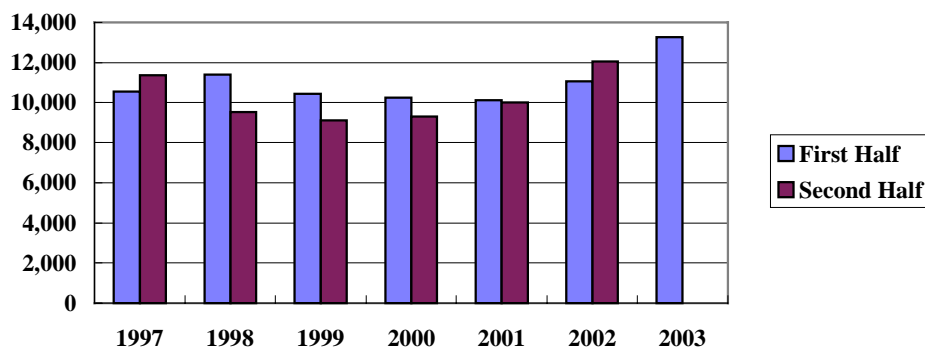


In the domestic eyeglass market, tough conditions persisted as unit prices fell due to deflation as well as to the preponderance of discount shops and a trend towards market bipolarization was observed. The Company introduced new products into the market and further promoted higher value-addition of products centered on progressive lenses so as to strengthen sales of products in the upper price band. Sales, however, decreased on a year-on-year basis.

Overseas, HOYA actively promoted higher value-addition of products, especially to increase the sales weight of progressive lenses, across all regions. Sales increased centered on such high value-added products including progressive and highly refractive lenses. In overseas, where a substantial volume of low-priced products were circulating in the market as well as in Japan, the Company strengthened its marketing of high-value-added products and sales increased to offset weak domestic business. The sales growth was also helped by an appreciation of the euro against the Yen in the currency markets on a year-on-year basis.

Health Care

Semiannual Net Sales of Health Care (Million Yen)

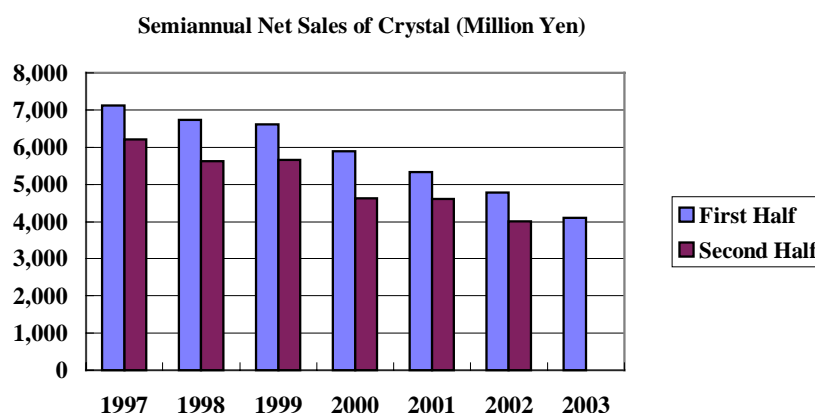


Sales of contact lenses increased on a year-on-year basis thanks to the reinforced sales promotion of high-value-added products including lenses for astigmatism and bifocal lenses and of products backed by our \mathcal{E} -System of lens compensation services as well as to the accelerated establishment of new outlets and to the effects of the Scrapping & Building of retail outlets.

Sales of intraocular lenses increased substantially on a year-on-year basis thanks to the favorable reputation of \mathcal{A} cryfold, a soft lens product that had been shipped since last year.

3. Lifestyle Refinement

Crystal



Sales of crystal decreased on a year-on-year basis as the market for gift use shrank amid the dampened personal consumption and as the Company started business reform in order to reconstruct its brand.

2. Financial Position

1) Conditions of Assets

	<u>Millions of Yen</u>
	<u>As of Sep.30, 2002</u>
Total assets	291,099
Shareholders' equity	227,964
Shareholders' equity ratio	78.3%

At the end of the period under review, while the outstanding balance of cash and deposits increased by Yen 21,747 million in comparison with that of the end of the previous fiscal year, fixed assets decreased by Yen 6,663 million. Total assets, therefore, increased by 13,032 million in comparison with that of the end of the previous fiscal year. Shareholders' equity also increased by Yen 8,784 million due to increase of retained earnings.

2) Conditions of Cash Flows

	<u>Millions of Yen</u>
	<u>Six months ended Sep. 30, 2002</u>
Net cash provided by operating activities	32,371
Net cash used in investing activities	-6,379
Net cash provided by (used in) financing activities	-3,161
Cash and cash equivalents, end of period	88,068

In terms of cash flows from operating activities, on the basis of Yen 22,938 million in income before income taxes and minority interests and Yen 9,710 million in depreciation and amortization, net cash provided by operating activities amounted to Yen 32,371 million. Net cash used in investing activities amounted to Yen 6,379 million, mainly used for development of next generation products in Electro-Optics division. Consequently, free cash flow amounted to Yen 25,992 million and used to payment of dividends, etc. The outstanding balance of cash and cash equivalents at the end of the period increased by Yen 21,747 million in comparison with that of the end of the previous fiscal year.

3. Business Plans for the Second Half

(Six months ending March 31, 2003)

1) Market Environment

The management environment for the coming six months is overcast as stock prices are falling worldwide and it is difficult to make a predictive forecast. In the event that the Christmas sales campaign turns out to be unexpectedly sluggish, business conditions will not recover but deteriorate again predictably in the New Year.

In terms of semiconductor-related business operations, functional enhancement towards next-generation products is expected.

2) Management Issues

In this situation, we think it important to clarify the positions in which each business segment of the Company is located, to utilize their strengths, and to assume several possible changes in the environment in order to operate their businesses flexibly according to the situations.

3) Operational Issues

In terms of mask blanks for manufacturing semiconductors, the Company will enhance production lines so as to supply high-precision products to meet customers demand. In August, the Company entered into a technological alliance with Dai Nippon Printing Co., Ltd. Actuating the respective strengths of the two companies, we will endeavor to expand sales.

In terms of photomasks for manufacturing semiconductors, further advances in minimization will underscore the importance of the development of next-generation products. The Company will carry out its strategies specialized in advanced technologies.

In terms of photomasks for LCDs, the Company will securely supply next-generation products.

The situation relating to glass disks for HDDs is more difficult due to sluggish sales of personal computers and reorganization of customers, etc. The Company will explore possibilities to expand the adoption of HDDs for home appliances and to expand its customer base.

In terms of optical products, the Company steadily supply the lenses for digital still and video cameras and endeavor to proceed further cost-reduction through technology innovation and overseas production to compete with plastic lenses.

In the Vision Care division, market conditions in Japan are difficult due to a fall in prices. The Company will endeavor to reduce costs by shifting its mass production facilities abroad and to expand sales of new products. Overseas, the Company will endeavor to enhance higher value-addition.

In the Health Care division, the Company will endeavor to further increase profitability as well as sales by accelerating the establishment of new outlets for contact lenses and by expanding sales of higher functional products such as soft intraocular lenses.

In the Crystal division, the Company will carry out reconstruction of its business structures towards high-grade products. We will aim at amelioration of profitability with a new line of products worthy of the HOYA brand.

4) Special Remarks : relating to extra-ordinary losses

In the coming six months, the Company expects to post extraordinary losses as follows:

1. Additional expenditure for early retirement in connection with the business reform carried out in the Vision Care and Crystal divisions: approx. Yen 2,000 million.
2. Loss on disposal of property, plant and equipment in connection with the above-mentioned business reform: approx Yen 1,000 million.
3. Loss on dissolution of the employee pension fund of the Company, and abolition of the employees' temporary retirement benefit system : approx Yen 16,000 million.

(Note) Dissolution of the Company's employee pension fund is conditional to the approval of the Ministry of Health, Labour and Welfare.

These forward looking statements involve known and unknown risks, uncertainties and other factors that may cause our actual results, performance or achievements to differ materially from that anticipated in these statements. These factors include changes in economic conditions, trends in our major markets, or currency exchange rates.

Hoya Corporation does not guarantee the accuracy or completeness of the information herein. Unless otherwise stated estimates or forecasts are solely those of our company and subject to change without notice. Hoya Corporation accepts no liability whatsoever for any direct or consequential loss arising from any use of this report.

(4) Consolidated Financial Statements (unaudited)

1. Consolidated Balance Sheets

HOYA CORPORATION and Consolidated Subsidiaries	Millions of Yen			
	Sep.30,2002	Mar.31,2002	Variance	Sep.30,2001
ASSETS				
Current assets	189,356	169,587	19,769	156,747
Cash and deposits	88,068	66,321	21,747	51,125
Notes and accounts receivable - trades	57,212	59,095	-1,883	59,344
Inventories	35,024	35,595	-571	35,817
Deferred taxes	4,354	3,615	739	3,712
Other current assets	5,925	6,352	-427	7,713
Allowance for doubtful receivables	-1,229	-1,392	163	-967
Fixed assets	101,388	108,051	-6,663	111,062
Tangible fixed assets	80,453	85,272	-4,819	84,863
Buildings and structures	24,733	26,272	-1,539	25,191
Machinery and vehicles	34,943	37,447	-2,504	37,235
Lands	9,389	9,445	-56	9,238
Other tangible fixed assets	11,387	12,107	-720	13,197
Intangible fixed assets	4,081	4,754	-673	4,012
Investments and other assets	16,853	18,025	-1,172	22,186
Investment securities	5,716	5,816	-100	9,412
Long-term deferred taxes	6,666	7,411	-745	7,778
Other investments and other assets	5,963	6,378	-415	6,674
Allowance for doubtful receivables	-1,493	-1,580	87	-1,679
Deferred charges	355	429	-74	506
Total Assets	291,099	278,067	13,032	268,316
LIABILITIES AND SHAREHOLDERS' EQUITY				
Current liabilities	53,922	49,113	4,809	53,633
Notes and accounts payable - trades	22,087	19,918	2,169	21,615
Short-term loan payable	3,264	3,378	-114	3,176
Income tax payable	7,883	4,867	3,016	6,353
Accrued bonus	3,602	3,881	-279	4,160
Other current liabilities	17,083	17,067	16	18,326
Long-term liabilities	9,057	9,617	-560	9,672
Long-term loan payable	417	569	-152	406
Employees retirement benefits	6,898	7,311	-413	8,091
Directors retirement benefits	293	254	39	201
Other long-term liabilities	1,446	1,482	-36	972
Total Liabilities	62,979	58,731	4,248	63,306
Minority interest	155	155	0	646
Common stock	6,264	6,264	0	6,264
Additional paid-in capital	15,898	15,898	0	15,898
Retained earnings	214,048	202,255	11,793	194,550
Evaluation difference of investments securitis	28	110	-82	-631
Foreign currency statement translation adjustments	-8,234	-5,331	-2,903	-11,716
Treasury stock, at cost	-40	-16	-24	0
Total Shareholders' Equity	227,964	219,180	8,784	204,363
Total	291,099	278,067	13,032	268,316
Notes:		<u>Millions of Yen</u>		
Accumulated depreciation	146,623	141,232		133,773
Guarantees of borrowings and lease obligations for customers	558	570		300
Number of shares of treasury stock	4,867	2,059		141

2. Consolidated Statements of Income

HOYA CORPORATION and Consolidated Subsidiaries

Millions of Yen

	Six months ended				
	Sep.30,2002	Sep.30,2001	Variance		Mar.31,2002
			Value	(%)	
Net sales	123,013	118,358	4,655	3.9	235,265
Cost of sales	66,796	67,818	-1,022	-1.5	134,258
Gross profit	56,216	50,539	5,677	11.2	101,006
Selling, general and administrative expenses	29,667	27,692	1,975	7.1	57,108
Operating income	26,549	22,847	3,702	16.2	43,897
Non-operating income	1,523	1,668	-145	-8.7	4,966
Interest income	272	229	43		476
Foreign exchange gains	-	-	-		1,033
Equity in earnings of associated companies	325	67	258		533
Others	925	1,371	-446		2,923
Non-operating expenses	3,045	1,818	1,227	67.5	3,090
Interest expense	223	311	-88		616
Foreign exchange losses	864	40	824		-
Others	1,956	1,466	490		2,473
Ordinary income	25,027	22,697	2,330	10.3	45,774
Extra-ordinary income	184	273	-89	-32.6	513
Gain on sales of investment securities	109	0	109		136
Gain on sales of property, plant and equipment	75	272	-197		335
Others	-	-	-		41
Extra-ordinary losses	2,273	775	1,498	193.3	8,700
Additional retirement benefits paid to employees	1,421	394	1,027		1,995
Loss on disposal of property, plant and equipment	339	197	142		1,528
Amortization of goodwill	-	-	-		469
Temporary plant closure expenses	-	-	-		777
Loss on sales of investment securities	-	-	-		3,118
Others	512	182	330		811
Income before income taxes and other items	22,938	22,194	744	3.4	37,587
Income taxes - Current	8,117	7,071	1,046	14.8	12,001
Income taxes - Deferred	-35	1,368	-1,403	-102.6	1,745
Minority interests in net income	11	95	-84	-88.4	99
Net income	14,845	13,660	1,185	8.7	23,740
Net income per share(Yen)	127.84	117.63	10.21		204.44

Notes:

1. Influences of Exchange Currency ("2002 A" is the actual value of this period. "2002 B" is the nominal value of this period which temporarily exchanged by the currency rate of the same period last year. unit : millions of Yen)

	2002 A	2002 B	influences
Net sales	123,013	121,627	1,386
Operating income	26,549	26,082	467
Ordinary income	25,027	24,566	461
Net income	14,845	14,467	378

		Six months ended			
		Sep.30,2002	Sep.30,2001	Variance(%)	Mar.31,2002
2. Average rates of major foreign currencies	Yen	121.99	122.03	0.0%	125.89
	Yen	117.41	107.93	-8.8%	110.98
	Yen	2.87	2.71	-5.9%	2.83

3. Consolidated Statements of Retained Earnings

HOYA CORPORATION and Consolidated Subsidiaries

Items	Millions of Yen			Year ended Mar. 31, 2002
	Six months ended		Variance	
	Sep. 30,2002	Sep. 30,2001		
Capital Retained Earnings				
Balance at the beginning of the period	15,898	15,898	-	15,898
Adjustment of retained earnings	-	-	-	-
Appropriations	-	-	-	-
Balance at the end of the period	15,898	15,898	-	15,898
Profit Retained Earnings				
Balance at the beginning of the period	202,255	184,361	17,894	184,361
Adjustment of retained earnings	14,845	13,865	980	24,472
1. Net income	14,845	13,660	1,185	23,740
2. for merger of unconsolidated subsidiaries	-	205	-205	667
3. for accounting changes at foreign subsidiaries	-	-	-	65
Appropriations	3,052	3,676	-624	6,579
1. Cash dividends	2,903	3,483	-580	6,386
2. Bonuses to directors	149	192	-43	192
Balance at the end of the period	214,048	194,550	19,498	202,255

4. Statements of Cash Flows

HOYA CORPORATION and Consolidated Subsidiaries

	Millions of Yen		
	Six months ended Sep.30,		
	2002	2001	Variance
OPERATING ACTIVITIES:			
Income before income taxes and minority interests	22,938	22,194	744
Adjustments for:			
Income taxes - paid	-5,004	-9,939	4,935
Depreciation and amortization	9,710	9,153	557
Provision for (reversal of) accrued bonuses to employees	-270	133	-403
Reversal of accrued retirement benefits	-374	-407	33
Provision for (Reversal of) reserve for periodic repairs	-83	151	-234
Equity in loss earnings of associated companies	-325	-67	-258
Foreign exchange loss	489	66	423
Bonus to directors	-149	-194	45
Devaluation losses on investment securities	32	131	-99
Gain on sales of property, plant and equipment and investment securities	-184	-273	89
Loss on disposal of property, plant and equipment and investment securities	339	197	142
Other	254	616	-362
<i>Changes in assets and liabilities:</i>			
(Increase) decrease in notes and accounts receivable	1,634	-4,324	5,958
(Increase) decrease in inventories	207	564	-357
(Increase) decrease in other current assets	326	-325	651
Increase (decrease) in notes and accounts payable	2,426	-1,891	4,317
Increase (Decrease) in other current liabilities	404	-658	1,062
Total adjustment			
Net cash provided by operating activities	32,371	15,127	17,244
INVESTING ACTIVITIES:			
Payment for purchases of property, plant and equipment	-6,807	-10,267	3,460
Proceeds from sales of property, plant and equipment	556	282	274
Payment for purchases of investment securities	-0	-462	462
Proceeds from sales of investment securities	307	2	305
Increase in investments and other assets	-834	-519	-315
Decrease in investments and other assets	398	220	178
Net cash used in investing activities	-6,379	-10,743	4,364
FINANCING ACTIVITIES:			
Net increase (decrease) in short-term borrowings	-257	-1,381	1,124
Repayments of long-term bank loans	-15	-29	14
Net (increase) decrease in treasury stock	-23	-1	-22
Dividends paid	-2,864	-3,508	644
Net cash used in financing activities	-3,161	-4,920	1,759
NET INCREASE (DECREASE) IN CASH AND CASH EQUIVALENTS	22,830	-537	23,367
Effect of Exchange Rate Changes on Cash and Cash Equivalents	-1,083	-290	-793
Cash and cash equivalents of merged non-consolidated subsidiaries, beginning of period	-	255	-255
CASH AND CASH EQUIVALENTS, BEGINNING OF PERIOD	66,321	51,697	14,624
CASH AND CASH EQUIVALENTS, END OF PERIOD	88,068	51,125	36,943

5. Scope of Consolidation and Application of the Equity Method

1. Number of consolidated subsidiaries : 52 companies
(Major companies: <overseas> HOYA HOLDINGS, INC.,HOYA LENS EUROPE N.V.,
HOYA HOLDINGS ASIA PACIFIC PTE. LTD., HOYA PHOTONICS, INC.
<domestic> HOYA HEALTHCARE CORPORATION,
HOYA CRYSTAL CORPORATION, HOYA OPTICS CORPORATION)
2. Number of unconsolidated subsidiaries : None
3. Number of affiliates : 6 companies (Number of affiliates accounted for by the equity method : 2 companies;
Major affiliate : NH TECHNO GLASS CORPORATION)

	as of Sep. 30,	as of Mar. 31,	variance	as of Sep. 30,2001
Consolidated subsidiaries	52 (do 8, os44)	51 (do 7, os44)	+1 (do+1, os -)	46 (do 6, os40)
Nonconsolidated subsidiaries	- (do -, os -)	- (do -, os -)	- (do-, os -)	1 (do 1, os -)
Affiliates	6 (do 6, os -)	6 (do 6, os -)	- (do-, os-)	8 (do 6, os 2)
Total Hoya Group	58	57	+1	55

(do : domestic, os : overseas)

Notes: Changes in Accounting Policies and Others

1. Changes in scope of consolidation and application of the equity method:
 - 1) In comparison to the end of March 31, 2002 c c 4 company increased.
 - a. Scope of consolidation
 - 1 company increased due to the establishment:
HOYA ADVANCED SEMICONDUCTOR TECHNOLOGIES CO.,LTD. (Japan)
 - b. Application of the equity method
No change
 - 2) In comparison to the end of Sep. 30, 2001 c c 6 companies increased in total.
 - a. Scope of consolidation
 - 4 companies increased due to the establishment:
HOYA OPTICAL ASIA CO.,LTD. (Hong Kong)
HOYA OPTO-ELECTRO QINGDAO LTD. (P.R.China)
THAI HOYA HOLDINGS LTD. (Thailand)
HOYA ADVANCED SEMICONDUCTOR TECHNOLOGIES CO.,LTD. (Japan)
 - 2 companies increased due to the increase of shareholding:
HOYA-OPTIKSLIP AB (Sweden, current name is HOYA LENS SWEDEN AB)
THAI HOYA LENS LTD. (Thailand)
 - 1 company increased due to the division from another consolidated subsidiary:
WELFARE CORPORATION (Japan)
 - 1 company increased due to the acquisition:
EAGLE OPTICS, INC. (USA)
 - 2 companies decreased due to the merger between overseas subsidiaries:
HOYA LENS FRANCE S.A.
(BUCHMANN FRANCE SAS merged HOYA LENS FRANCE S.A. and changed its corporate name to HOYA LENS FRANCE SAS)
HOYA HOLDINGS BELGIUM N.V. (This company was merged into HOYA LENS EUROPE N.V.)
 - b. Application of the equity method
 - 2 companies decreased due to the increase of shareholding and changed to consolidated subsidiaries:
HOYA-OPTIKSLIP AB (Sweden, current name is HOYA LENS SWEDEN AB)
THAI HOYA LENS LTD. (Thailand)
2. Changes in accounting policy :
None

Notes Relating to Consolidated Statements of Cash Flows

1. Cash and Cash Equivalents at the End of the Period

	<u>Millions of Yen</u>		
	<u>Six months ended Sep. 30,</u> <u>2002</u>	<u>2001</u>	<u>Year ended</u> <u>Mar.31,2002</u>
Cash and deposits	88,068	51,125	66,321
Marketable securities	-	-	-
Total	<u>88,068</u>	<u>51,125</u>	<u>66,321</u>

2. Details of Assets and Liabilities of the Newly Consolidated Subsidiaries by Acquisition of Shares

Six months ended Sep. 30, 2002

None

Six months ended Sep. 30, 2001

None

Year ended Mar. 31, 2002

HOYA-OPTIKSLIP AB (as of Oct. 1, 2001)

	<u>Millions of Yen</u>
Current assets	561
Fixed assets	190
Current liabilities	-456
Long-term liabilities	-164
Adjustment of consolidation	335
Stock of company of the equity method	-65
Value for acquisition of shares of this subsidiary	<u>400</u>
Cash and cash equivalents possessed by this subsidiary	<u>-15</u>
Balance : Payments for purchases of this subsidiary net of cash acquired	<u>384</u>

EAGLE OPTICS, INC. (as of Feb. 1, 2002)

Current assets	76
Goodwill	469
Fixed assets	61
Current liabilities	-72
Long-term liabilities	<u>-52</u>
Value for acquisition of shares of this subsidiary	<u>480</u>
Cash and cash equivalents possessed by this subsidiary	<u>-6</u>
Balance : Payments for purchases of this subsidiary net of cash acquired	<u>474</u>

THAI HOYA LENS LTD. (as of Mar. 31, 2002)

Current assets	411
Fixed assets	64
Current liabilities	-54
Long-term liabilities	-4
Adjustment of consolidation	-147
Stock of company of the equity method	<u>-212</u>
Value for acquisition of shares of this subsidiary	<u>58</u>
Cash and cash equivalents possessed by this subsidiary	<u>-132</u>
Balance : Payments for purchases of this subsidiary net of cash acquired	<u>-73</u>

Notes Relating to Consolidated Statements of Cash Flows c 2

3. Details of Asstets and Liabilities of the Newly Consolidated Subsidiary

Six months ended Sep. 30, 2002

None

Six months ended Sep. 30, 2001

HOYA FIBER-PHOTONICS CORPORATION (as of July 1, 2001)

Current assets	388
Fixed assets	<u>46</u>
Total assets	<u>434</u>
Current liabilities	<u>-66</u>
Long-term liabilities	<u>-3</u>
Total liabilities	<u>-69</u>

Year ended Mar. 31, 2002

Millions of Yen

HOYA FIBER-PHOTONICS CORPORATION (as of July 1, 2001)

Current assets	388
Fixed assets	<u>46</u>
Total assets	<u>434</u>
Current liabilities	<u>-66</u>
Long-term liabilities	<u>-3</u>
Total liabilities	<u>-69</u>

WELFARE CORPORATION

(merged into HOYA SERVICE CORPORATION, a consolidated subsidiary on Oct. 1, 2001)

Current assets	530
Fixed assets	<u>201</u>
Total assets	<u>732</u>
Current liabilities	<u>-100</u>
Long-term liabilities	<u>-26</u>
Total liabilities	<u>-126</u>

Note: This company was reborn as a consolidated subsidiary divided from HOYA SERVICE CORP. on Jan.1, 2002)

Notes Relating to Investment Securities and Derivatives

1. Investment securities of current market values:

(Millions of Yen)

	As of								
	<u>Sep.30, 2002</u>			<u>Mar.31, 2002</u>			<u>Sep.30, 2001</u>		
	Cost	Fair Value	Variance	Cost	Fair Value	Variance	Cost	Fair Value	Variance
Available-for-sale									
Available-for-sale :									
Marketable Equity securities	202	251	49	399	589	189	3,334	2,252	-1,081
Government bonds	-	-	-	-	-	-	-	-	-
Corporate bonds	-	-	-	-	-	-	-	-	-
Others	-	-	-	-	-	-	-	-	-
Total	202	251	49	399	589	189	3,334	2,252	-1,081

2. Investment securities of non-current market values:

(Millions of Yen)

	As of		
	<u>Sep.30, 2002</u>	<u>Mar.31, 2002</u>	<u>Sep.30, 2001</u>
	Non-marketable equity securities	5,464	5,226
Non-marketable corporate bonds	-	-	1,650
Commercial paper	-	-	-
Total	5,464	5,226	7,159

3. Derivatives

None

Notes Relating to Tax Effect Accounting

1. Breakdown of deferred tax assets and deferred tax liabilities by major cause of accrual:

	<u>Millions of Yen</u>		
	<u>As of</u>		
(1) Current deferred tax assets and liabilities	<u>Sep.30, 2002</u>	<u>Mar.31, 2002</u>	<u>Sep.30, 2001</u>
Deferred tax assets			
Excess deductible amount of depreciation expenses	1,264	1,266	1,272
Excess deductible amount of expenses for accrued bonus	1,212	1,089	1,129
Inventories - intercompany unrealized profits	696	921	838
Enterprise tax not deductible	613	351	528
Other deferred tax assets	638	622	713
Total amount of deferred tax assets - current	<u>4,425</u>	<u>4,250</u>	<u>4,482</u>
Deferred tax liabilities			
Prepaid pension expenses	-71	-518	-665
Other deferred tax liabilities	-	-116	-104
Total amount of deferred tax liabilities - current	<u>-71</u>	<u>-635</u>	<u>-770</u>
Net amount of deferred tax assets - current	<u>4,354</u>	<u>3,615</u>	<u>3,712</u>
(2) Non-current deferred tax assets and liabilities			
Deferred tax assets			
Excess amount of inclusion in deductible expenses for depreciation	2,147	2,910	3,547
Excess amount of inclusion in deductible expenses for reserve for employees' retirement benefits	2,613	2,548	2,542
Amount denied of evaluation loss of fixed assets	657	677	675
Excess amount of inclusion in deductible expenses for allowance for doubtful receivables	281	246	226
Other deferred tax assets	2,135	2,253	2,043
Total amount of deferred tax assets - fixed	<u>7,835</u>	<u>8,635</u>	<u>9,034</u>
Deferred tax liabilities			
Reserve for deferred income taxes on fixed assets	-618	-656	-694
Special depreciation reserve	-358	-344	-389
Difference of evaluation of other marketable securities	-20	-78	-
Other deferred tax liabilities	-171	-145	-171
Total amount of deferred tax liabilities - fixed	<u>-1,168</u>	<u>-1,224</u>	<u>-1,256</u>
Net amount of deferred tax assets - fixed	<u>6,666</u>	<u>7,411</u>	<u>7,778</u>

2. Reconciliation of the difference between statutory income tax rate and actual tax rate:

	<u>Six months ended Sep. 30,</u>		<u>Year ended</u>
	<u>2002</u>	<u>2001</u>	<u>Mar.31,2002</u>
Statutory tax rate of the Company	41.7 %	41.7 %	41.7 %
(Adjustment)			
Lower income tax rates applicable to income in certain foreign countries	-7.5	-5.6	-5.2
Non-Deductible expenses such as entertainment expenses	0.4	0.4	0.5
Per capita levy of inhabitants tax and others	0.3	0.3	0.3
Non-taxable income such as dividend received	-2.6	-4.6	-3.9
Intercompany cash dividend	2.6	4.6	3.8
Other adjustment	0.3	1.2	-0.6
Effective income tax rate	<u>35.2</u>	<u>38.0</u>	<u>36.6</u>

Notes Relating to Employees' Retirement Benefits

1. Systems of employees' retirement benefits the Company adopts

Lump-sum retirement benefit plan and multi-employer pension plan grants and of welfare pension

	<u>Millions of Yen</u>		
	<u>As of</u>		
2. <u>Details of liabilities for employees' retirement benefits</u>			
(1) Breakdown of liabilities for employees' retirement benefits	<u>Sep.30, 2002</u>	<u>Mar.31, 2002</u>	<u>Sep.30,2001</u>
Liabilities for employees' retirement benefits	67,256	66,510	55,204
Pension assets	-38,213	-37,126	-41,545
Accrued liabilities for employees' retirement benefits	29,043	29,383	13,659
Unappropriated amount of the difference arising from the change in accounting standards	2,640	2,745	2,850
Unrecognized prior service cost (decrease in liabilities)	1,614	1,696	1,777
Unrecognized actuarial differences (increase in liabilities)	-26,569	-27,756	-11,791
Prepaid pension expenses	169	1,243	1,595
Reserve for employees' retirement benefits	<u>6,898</u>	<u>7,311</u>	<u>8,091</u>
	<u>Six months ended Sep. 30,</u>	<u>2001</u>	<u>Year ended</u>
(2) Breakdown of expenses for employees' retirement benefits	<u>2002</u>	<u>2001</u>	<u>Mar.31,2002</u>
Service cost	1,129	832	1,667
Interest expenses	822	939	1,879
Expected return of investments	-1,015	-1,097	-2,194
Difference arising from the change in accounting standards	-104	-105	-210
Prior service cost	-81	-81	-162
Actuarial differences	1,187	508	1,020
sub total	1,938	997	2,000
Additional retirement benefits paid to employees	1,421	394	1,995
Expenses for employees' retirement benefits	<u>3,360</u>	<u>1,392</u>	<u>3,996</u>
	<u>Six months ended Sep. 30,</u>	<u>2001</u>	<u>Year ended</u>
(3) Calculation basis of liabilities for employees' retirement benefits	<u>2002</u>	<u>2001</u>	<u>Mar.31,2002</u>
1. Discount rate	2.5%	3.5%	2.5%
2. Expected rate of return of investments	5.5%	5.5%	5.5%
3. Method of periodical allocation of the estimated amount of employees' retirement benefits	pro rata division over the period	pro rata division over the period	pro rata division over the period
4. Number of years over which the difference arising from the change in accounting standards is amortized	15 years	15 years	15 years
5. Number of years over which the prior service cost is amortized	12 years	12 years	12 years
6. Number of years over which the actuarial differences are amortized	12 years	12 years	12 years

(5) Segment Information (unaudited)

HOYA CORPORATION and Consolidated Subsidiaries

1. Operations Different Industries

(Figures less than a million Yen are omitted.)

for the six months ended September 30, 2002

	Millions of Yen							Elimin. or corp.*	Consolidated
	Electro- Optics	Photo- nics	Vision Care	Health Care	Crystal	Service	Total		
Net sales:									
To outside customers	54,630	3,059	47,268	13,266	4,103	685	123,013	-	123,013
Intersegment	116	-	14	0	11	1,407	1,550	(1,550)	-
Total	54,747	3,059	47,283	13,266	4,115	2,092	124,564	(1,550)	123,013
Operating expenses	38,043	3,528	39,055	10,749	3,914	1,972	97,263	(798)	96,464
Operating income	16,703	-468	8,228	2,517	200	120	27,301	(752)	26,549
Operating income ratio	30.5%	-15.3%	17.4%	19.0%	4.9%	5.7%	21.9%	-	21.6%
Assets	116,038	4,121	93,788	16,083	8,576	2,997	241,607	49,492	291,099
Depreciation	6,408	42	2,748	281	158	15	9,656	54	9,710
Capital Expenditures	4,945	38	1,512	232	57	2	6,789	9	6,798
R&D Expenses	2,822	251	788	343	16	-	4,222	-22	4,200
Number of employees (p)	6,021	229	6,379	625	283	129	13,666	45	13,711

for the six months ended September 30, 2001

	Millions of Yen							Elimin. or corp.*	Consolidated
	Electro- Optics	Photo- nics	Vision Care	Health Care	Crystal	Service	Total		
Net sales:									
To outside customers	51,980	3,549	46,218	11,050	4,779	780	118,358	-	118,358
Intersegment	369	-	13	811	20	1,391	2,605	(2,605)	-
Total	52,349	3,549	46,231	11,861	4,800	2,171	120,964	(2,605)	118,358
Operating expenses	37,624	3,744	39,188	10,218	4,681	1,986	97,443	(1,931)	95,511
Operating income	14,725	-195	7,043	1,643	119	185	23,521	(674)	22,847
Operating income ratio	28.1%	-5.5%	15.2%	13.9%	2.5%	8.5%	19.4%	-	19.3%
Assets	110,167	4,468	86,895	14,106	9,450	3,246	228,335	39,981	268,316
Depreciation	5,800	154	2,613	271	236	19	9,096	57	9,153
Capital Expenditures	7,297	27	2,384	386	176	1	10,274	4	10,279
R&D Expenses	2,068	246	725	300	22	-	3,363	0	3,363
Number of employees (p)	5,491	239	6,112	625	311	122	12,900	40	12,940

Ref:

Differences between the first half of this year and the same period last year

	Millions of Yen							Elimin. or corp.*	Consolidated
	Electro- Optics	Photo- nics	Vision Care	Health Care	Crystal	Service	Total		
Net sales:									
To outside customers	2,650	-490	1,050	2,216	-676	-95	4,655	-	4,655
Variance(%)	5.1%	-13.8%	2.3%	20.1%	-14.1%	-12.2%	3.9%	-	3.9%
Intersegment	-253	-	1	-811	-9	16	-1,055	1,055	-
Total	2,398	-490	1,052	1,405	-685	-79	3,600	1,055	4,655
Operating expenses	419	-216	-133	531	-767	-14	-180	1,133	953
Operating income	1,978	-273	1,185	874	81	-65	3,780	(78)	3,702
Variance(%)	13.4%	-	16.8%	53.2%	68.1%	-35.1%	16.1%	-	16.2%
Assets	5,871	-347	6,893	1,977	-874	-249	13,272	9,511	22,783
Depreciation	608	-112	135	10	-78	-4	560	-3	557
Capital Expenditures	-2,352	11	-872	-154	-119	1	-3,485	5	-3,481
R&D Expenses	754	5	63	43	-6	-	859	-22	837
Number of employees (p)	530	-10	267	0	-28	7	766	5	771

*Elimi. or corp. : Eliminations or corporate

Notes:

1. The Business Categories and Industries over the six months ended September 30, 2002 are as follows:

Business Category	Industries	Products and Services
Information Technology	Electro-Optics	Photomasks and Maskblanks for semiconductors, Masks and devices for liquid-crystal displays (LCDs) Glass disks for hard disk drives (HDDs), Optical Communication, Optical lenses, optical glasses, electronic glasses, etc.
	Photonics	Lazer equipments for industrial, research & laboratory, and medical purposes, etc.
Eye Care	Vision Care	Eyeglass lenses, eyeglass frames, ophthalmic equipments, etc.
	Health Care	Contact lenses, intraocular lenses, hearing aids, etc.
Lifestyle Refinement	Crystal	Crystal glass products
	Service	Design of information systems, placement of temporary staff, etc.

2. Corporate operating expenses mainly consist of the administration expenses of the headquarters of the Company and the overseas regional holding companies in the two geographic areas, which are not allocated to each industry segment. Corporate operating expenses for the six months ended Sep. 30, 2002 and 2001 are as follows:

2002	971 million Yen	2001	846 million Yen
------	-----------------	------	-----------------

3. Corporate assets mainly consist of cash, time deposits, marketable securities, investments securities and administrative assets of the Company and the overseas regional holding companies in the two geographic areas. Corporate assets as of Sep. 30, 2002 and 2001 are as follows:

2002	61,309 million Yen	2001	49,232 million Yen
------	--------------------	------	--------------------

2. Foreign Operations

(Figures less than a million Yen are omitted.)

for the six months ended September 30, 2002

Millions of Yen							
	Japan	North America	Europe	Asia	Total	Elimi. or corp.	Consolidated
Net sales:							
To outside customers	83,236	18,474	15,308	5,994	123,013	-	123,013
Intersegment	8,716	24	842	21,428	31,011	(31,011)	-
Total	91,952	18,498	16,150	27,423	154,025	(31,011)	123,013
Operating expenses	73,927	18,057	13,615	22,353	127,954	(31,490)	96,464
Operating income	18,025	440	2,535	5,069	26,070	478	26,549
Operating income ratio	19.6%	2.4%	15.7%	18.5%	16.9%	-	21.6%
Assets	144,238	19,665	31,514	54,123	249,541	41,558	291,099

for the six months ended September 30, 2001

Millions of Yen							
	Japan	North America	Europe	Asia	Total	Elimi. or corp.	Consolidated
Net sales:							
To outside customers	82,430	17,947	13,082	4,898	118,358	-	118,358
Intersegment	7,313	67	512	19,071	26,964	(26,964)	-
Total	89,744	18,014	13,594	23,970	145,323	(26,964)	118,358
Operating expenses	73,167	17,147	11,734	20,530	122,580	(27,068)	95,511
Operating income	16,576	867	1,860	3,439	22,742	104	22,847
Operating income ratio	18.5%	4.8%	13.7%	14.3%	15.7%	-	19.3%
Assets	145,839	20,559	25,897	48,736	241,033	27,283	268,316

Ref:

Differences between the first half of this year and the same period last year

Millions of Yen							
	Japan	North America	Europe	Asia	Total	Elimi. or corp.	Consolidated
Net sales:							
To outside customers	806	527	2,226	1,096	4,655	-	4,655
Variance(%)	1.0%	2.9%	17.0%	22.4%	3.9%	-	3.9%
Intersegment	1,403	-43	330	2,357	4,047	(4,047)	-
Total	2,208	484	2,556	3,453	8,702	(4,047)	4,655
Operating expenses	760	910	1,881	1,823	5,374	(4,422)	953
Operating income	1,449	-427	675	1,630	3,328	374	3,702
Variance(%)	8.7%	-49.3%	36.3%	47.4%	14.6%	-	16.2%
Assets	-1,601	-894	5,617	5,387	8,508	14,275	22,783

Notes:

1. The Company and its consolidated subsidiaries are summarized in four segments by geographic area based on the countries where the Companies are located. The segments consisted of the following countries:

- North America: United States of America and Canada
- Europe: Netherlands, Germany, United Kingdom, etc.
- Asia: Singapore, Republic of Korea, Taiwan, etc.

2. Corporate operating expenses mainly consist of the administration expenses of the headquarters of the Company and the overseas regional holding companies in the two geographic areas. Corporate operating expenses for the six months ended Sep. 30, 2002 and 2001 are as follows:

2001	857 million Yen	2000	764 million Yen
------	-----------------	------	-----------------

3. Corporate assets mainly consist of cash, time deposits, marketable securities, investments securities and administrative assets of the Company and the overseas regional holding companies in the two geographic areas. Corporate assets as of Sep. 30, 2002 and 2001 are as follows:

2001	57,816 million Yen	2000	43,766 million Yen
------	--------------------	------	--------------------

3. Overseas Sales

(Figures less than a million Yen are omitted.)

for the six months ended September 30, 2002

	Millions of Yen				
	North America	Europe	Asia	Other	Total
Overseas Sales (A)	18,946	18,967	15,384	56	53,354
Consolidated Sales (B)					123,013
Overseas Sales ratio A/B	15.4%	15.5%	12.5%	0.0%	43.4%
Regional Sales ratio	35.5%	35.6%	28.8%	0.1%	100.0%

for the six months ended September 30, 2001

	Millions of Yen				
	North America	Europe	Asia	Other	Total
Overseas Sales (A)	19,915	18,030	11,906	31	49,884
Consolidated Sales (B)					118,358
Overseas Sales ratio A/B	16.8%	15.2%	10.1%	0.0%	42.1%
Regional Sales ratio	39.9%	36.1%	23.9%	0.1%	100.0%

Ref:

Differences between the first half of this year and the same period last year

	Millions of Yen				
	North America	Europe	Asia	Other	Total
Overseas Sales (A)	-969	937	3,478	25	3,470
Consolidated Sales (B)					4,655
Overseas Sales ratio A/B	-4.9%	5.2%	29.2%	80.6%	7.0%

Note: The Company and consolidated subsidiaries are summarized in four segments by geographic area based on the countries where the Companies are located. The segments consisted of the following countries:

North America: United States of America, Canada, etc.
 Europe: Netherlands, Germany, United Kingdom, etc.
 Asia: Singapore, Republic of Korea, Taiwan, etc.
 Other: Saudi Arabia, Brazil, etc.

(6) Composition of Net Sales by Segment (unaudited)

HOYA CORPORATION and Consolidated Subsidiaries

Business Category Company	Millions of yen [%]				
	Six months ended September 30,		Variance		Year ended March 31,
	2002	2001	Value	(%)	2002
Electro-Optics					
Domestic	31,456 (57.6)	29,408 (56.6)	2,048	7.0	56,383 (55.6)
Overseas	23,173 (42.4)	22,572 (43.4)	601	2.7	45,112 (44.4)
total	54,630 [44.4]	51,980 [43.9]	2,650	5.1	101,496 [43.1]
Photonics					
Domestic	1,695 (55.4)	1,737 (49.0)	-42	-2.4	3,630 (50.7)
Overseas	1,364 (44.6)	1,811 (51.0)	-447	-24.7	3,526 (49.3)
total	3,059 [2.5]	3,549 [3.0]	-490	-13.8	7,157 [3.1]
Information Technology					
Domestic	33,152 (57.5)	31,146 (56.1)	2,006	6.4	60,013 (55.2)
Overseas	24,537 (42.5)	24,383 (43.9)	154	0.6	48,639 (44.8)
total	57,690 [46.9]	55,529 [46.9]	2,161	3.9	108,653 [46.2]
Vision Care					
Domestic	18,864 (39.9)	21,208 (45.9)	-2,344	-11.1	39,715 (42.6)
Overseas	28,404 (60.1)	25,010 (54.1)	3,394	13.6	53,468 (57.4)
total	47,268 [38.4]	46,218 [39.1]	1,050	2.3	93,184 [39.6]
Health Care					
Domestic	13,235 (99.8)	10,998 (99.5)	2,237	20.3	23,013 (99.6)
Overseas	30 (0.2)	52 (0.5)	-22	-42.3	91 (0.4)
total	13,266 [10.8]	11,050 [9.3]	2,216	20.1	23,105 [9.8]
Eye Care					
Domestic	32,100 (53.0)	32,206 (56.2)	-106	-0.3	62,729 (53.9)
Overseas	28,434 (47.0)	25,062 (43.8)	3,372	13.5	53,560 (46.1)
total	60,535 [49.2]	57,268 [48.4]	3,267	5.7	116,289 [49.4]
Crystal					
Domestic	3,721 (90.7)	4,346 (90.9)	-625	-14.4	7,975 (90.8)
Overseas	381 (9.3)	433 (9.1)	-52	-12.0	812 (9.2)
total	4,103 [3.3]	4,779 [4.0]	-676	-14.1	8,788 [3.7]
Service					
Domestic	685 (100.0)	775 (99.4)	-90	-11.6	1,528 (99.6)
Overseas	0 (0.0)	5 (0.6)	-5	-	5 (0.4)
total	685 [0.6]	780 [0.7]	-95	-12.2	1,534 [0.7]
Lifestyle Refinement					
Domestic	4,406 (92.0)	5,121 (92.1)	-715	-14.0	9,504 (92.1)
Overseas	381 (8.0)	438 (7.9)	-57	-13.0	817 (7.9)
total	4,788 [3.9]	5,560 [4.7]	-772	-13.9	10,322 [4.4]
Total Net Sales					
Domestic	69,658 (56.6)	68,474 (57.9)	1,184	1.7	132,248 (56.2)
Overseas	53,354 (43.4)	49,884 (42.1)	3,470	7.0	103,017 (43.8)
total	123,013 [100.0]	118,358 [100.0]	4,655	3.9	235,265 [100.0]

Notes: 1. Figures of less than a million yen are omitted.

2. Figures in () are percentages of business category sales.

3. Figures in [] are percentages of total net sales.